

Skull^[edit]

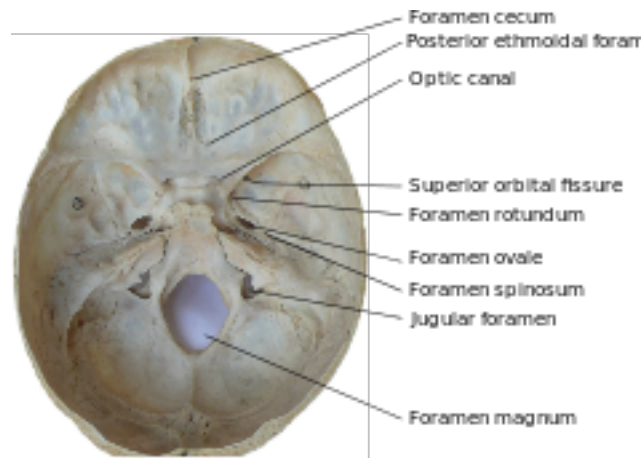


Image of base of the skull with several of the foramina labeled. The human skull has numerous holes (foramina) through which cranial nerves, arteries, veins and other structures pass.

Bone	Cranial fossa	Foramina	Vessels	Nerves
frontal	-	supraorbital foramen	supraorbital artery, supraorbital vein	supraorbital r
frontal	anterior cranial fossa	foramen cecum	emissary veins to superior sagittal sinus from the nose ^[1]	
ethmoid	-	foramina of cribriform plate	-	olfactory nerve
ethmoid	anterior cranial fossa	anterior ethmoidal foramen	anterior ethmoidal artery anterior ethmoidal vein	anterior ethm
ethmoid	anterior cranial fossa	posterior ethmoidal foramen	posterior ethmoidal artery posterior ethmoidal vein	posterior ethi
sphenoid	-	optic canal	ophthalmic artery	optic nerve (I

From Online Source - Re-Edited by Dr. C. Gerinfor Anatomy or A&P 100-200 Levels.

sphenoid	middle cranial fossa	superior orbital fissure	superior ophthalmic vein	oculomotor n trochlear n lacrimal, front nasociliary br ophthalmic n abducent ner
sphenoid	middle cranial fossa	foramen rotundum	-	maxillary ner
maxilla	-	incisive foramen/incisive canal	sphenopalatine artery	Terminal part nasopalatine
palatine	-	greater palatine foramen	greater palatine artery greater palatine vein	greater palati
palatine and maxilla	-	lesser palatine foramina	lesser palatine artery lesser palatine vein	lesser palatine nerve, Anterior nerve ^[1]
sphenoid and maxilla	-	inferior orbital fissure	inferior ophthalmic veins infraorbital artery infraorbital vein, tributary of pterygoid plexus	zygomatic ne infraorbital ne nerve (V ₂) orbital branch pterygopalati
maxilla	-	infraorbital foramen	infraorbital artery infraorbital vein, tributary of pterygoid plexus	infraorbital ne
sphenoid	middle cranial fossa	foramen ovale	accessory meningeal artery, emissary vein connecting cavernous sinus with pterygoid plexus	mandibular n lesser petros (occasionally
sphenoid	middle cranial fossa	foramen spinosum	middle meningeal artery	meningeal br mandibular n
sphenoid	middle cranial fossa	foramen lacerum	artery of pterygoid canal, Meningeal branch of ascending pharyngeal artery, Occipital artery emissary vein	nerve of pter through it's a

From Online Source - Re-Edited by Dr. C. Germ for Anatomy of A&P 100-200 Levels.

temporal	posterior or cranial fossa	internal acoustic meatus	labyrinthine artery	facial nerve, vestibulocochlear nerve (VIII)
temporal	posterior or cranial fossa	jugular foramen	internal jugular vein, inferior petrosal sinus, sigmoid sinus, Occipital artery	glossopharyngeal nerve (IX), vagus nerve (X), accessory n. (XI)
occipital	posterior or cranial fossa	hypoglossal canal	-	hypoglossal nerve (XII)
occipital	posterior or cranial fossa	foramen magnum	anterior and posterior spinal arteries, vertebral arteries	lowest part of oblongata, the ascending spinal accessory nerve
temporal	posterior or cranial fossa	stylomastoid foramen	stylomastoid artery	facial nerve (VII)



- Base of the skull. Upper surface

Base of the skull. Inferior surface, attachment of muscles marked in red

From Online Source - Re-Edited by Dr. C. Gerin for Anatomy or A&P 100-200 Levels